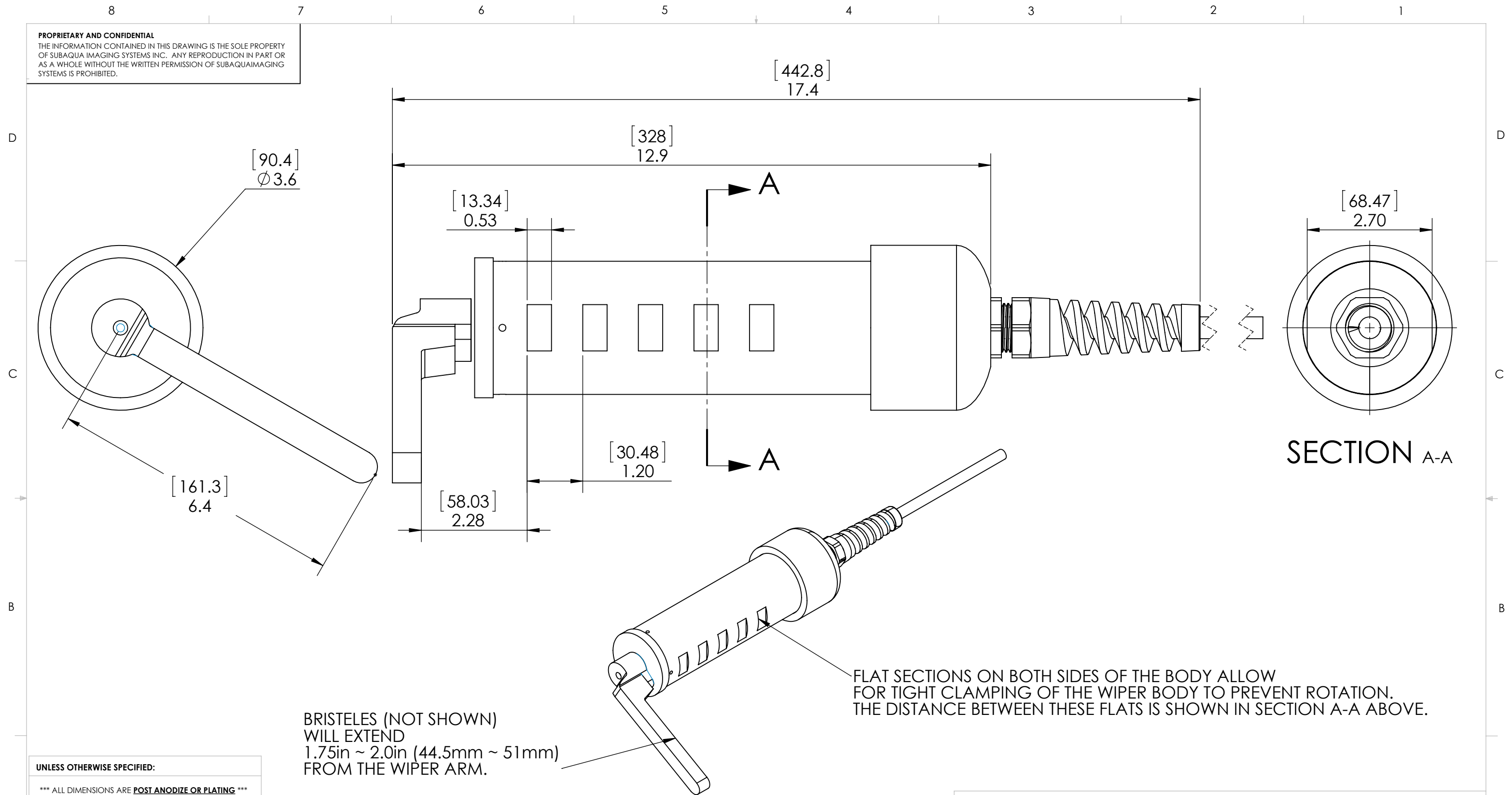


PROPRIETARY AND CONFIDENTIAL
 THE INFORMATION CONTAINED IN THIS DRAWING IS THE SOLE PROPERTY OF SUBAQUA IMAGING SYSTEMS INC. ANY REPRODUCTION IN PART OR AS A WHOLE WITHOUT THE WRITTEN PERMISSION OF SUBAQUAIMAGING SYSTEMS IS PROHIBITED.



BRISTELES (NOT SHOWN)
 WILL EXTEND
 1.75in ~ 2.0in (44.5mm ~ 51mm)
 FROM THE WIPER ARM.

FLAT SECTIONS ON BOTH SIDES OF THE BODY ALLOW
 FOR TIGHT CLAMPING OF THE WIPER BODY TO PREVENT ROTATION.
 THE DISTANCE BETWEEN THESE FLATS IS SHOWN IN SECTION A-A ABOVE.

UNLESS OTHERWISE SPECIFIED:

*** ALL DIMENSIONS ARE **POST ANODIZE OR PLATING** ***
 DIMENSIONS ARE IN INCHES [MM]
 TOLERANCES:
 LINEAR: 0.XX ±.020
 DIAMETER: 0.XX ±.01
 LINEAR: 0.XXX ±.005
 DIAMETER: 0.XXX ±.002
 HOLES: ±.003
 FRACTIONAL ±1/64
 ANGULAR: ±.5°

SURFACE FINISH ALL $\sqrt{64}$
 SURFACE FINISH SEALS $\sqrt{32}$
 REMOVE ALL SHARP EDGES AND BURRS

USED ON	SIZE/LENGTH CONDITION	MATERIAL PVC Rigid
POST PROCESS	PLATING	ANODIZE
NEXT ASSEMBLY	NOTES	COLOR GREY
FILE NAME Z:\795 Wipers\001 Flat Port\Assembly as Part\795-001-002_Small_Wiper_Final_ASSY		DO NOT SCALE DRAWING

SUBAQUA IMAGING SYSTEMS INC		SubAqua Imaging Systems, Inc 1134 Opal Street, San Diego, CA 92109, USA (858) 414 0383 www.subaquaimaging.com	
ORIG ENG	R.GRAY	DATE	6/3/2021
ORIG DWG	R.GRAY	DATE	7/26/2021
LAST UPDATE	Ronan	DATE	9/20/2022
REL TO PROD	R.GRAY	DATE	07/26/21
TITLE: FLAT SURFACE WIPER		SIZE	DWG. NO.
		B	795-001-002
		SCALE: 1:2	REV A
		WEIGHT:	SHEET 1 OF 1

CAGE CODE: 6JFR2